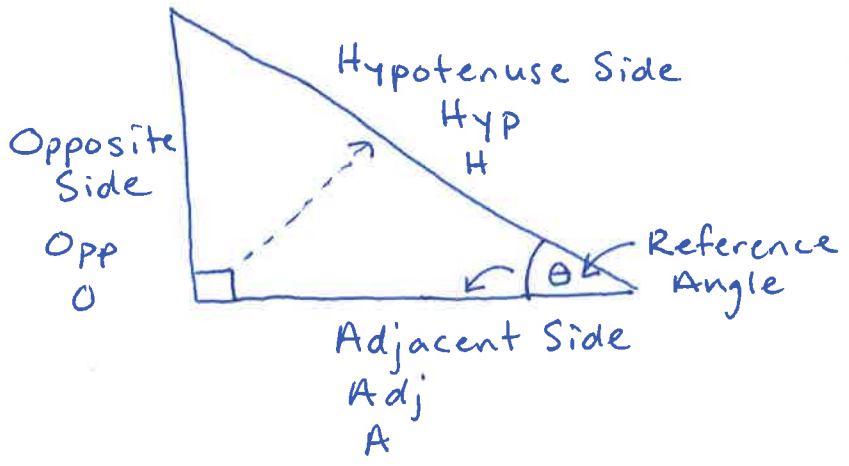


Notes

# Right Triangle Trigonometry

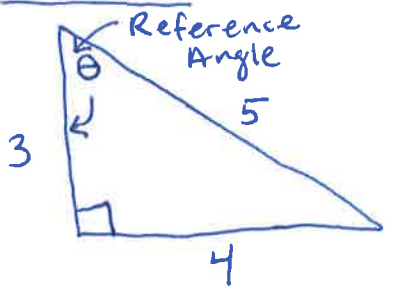
$\theta$  = theta (the reference Angle)



Ratios:

1.  $\frac{Opp}{Hyp}$
2.  $\frac{Adj.}{Hyp}$
3.  $\frac{Opp}{Adj}$
4.  $\frac{Hyp}{Opp}$
5.  $\frac{Hyp}{Adj}$
6.  $\frac{Adj}{Opp}$

Example

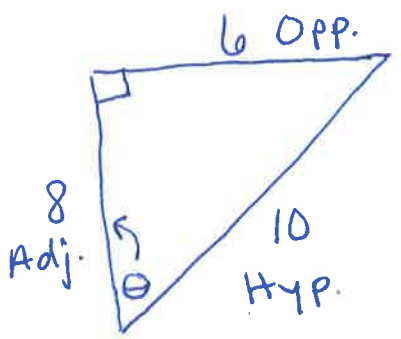


Adjacent Side = 3  
 Opposite Side = 4  
 Hypotenuse = 5

Ratios:

1.  $\frac{O}{H} = \frac{4}{5}$
2.  $\frac{A}{H} = \frac{3}{5}$
3.  $\frac{O}{A} = \frac{4}{3}$
4.  $\frac{H}{O} = \frac{5}{4}$
5.  $\frac{H}{A} = \frac{5}{3}$
6.  $\frac{A}{O} = \frac{3}{4}$

Example



Example

